



**GREEN
COMMITMENT**

**LISBON
VENUES**



Dear visitors and clients,

At Lisbon Venues, both CCL - Lisbon Congress Center and FIL - Lisbon Exhibition & Convention Center, we are committed to quality and sustainability for a long time, as those values are the future: [we all need to care for our planet and our future generations](#).

Since 2003, an Integrated Management System has been implemented in order to ensure quality, to [meet customer expectations](#), to guarantee sustainable development and to promote a healthy organizational culture in our sphere. In a commitment to [quality](#) and [sustainability](#), Lisbon Venues obtained from APCER (Portuguese Association of Certification), a [Certification for the Quality Management System - ISO 9001](#) and is currently updating it and implementing the Environmental Management System, as well as the [Occupational Safety and Health Management System](#).

The Environmental Management System aims to [incorporate environmental issues](#) in the work processes, to promote environmental protection, to reduce pollution and minimize the impact of the activity on the environment.

Lisbon Venues [recycles](#) paper, cardboard, plastic, glass, electrical wiring / metal, batteries, lamps and ink cartridges. The obsolete equipment is delivered for [convenient disposal](#). All the spare material from events is recycled or reused.

Regarding the use of electricity and water, Lisbon Venues implemented a rationalization program, which involved the replacement of the old hydro-sanitary equipment for new equipment, more efficient, and the purchase of equipment for the flow control.

Concerning the electricity, there was a replacement of all the old halogen lamps for new LED lamps, also more efficient. Along with these programs, we [promote green events /green meetings](#) in our facilities, proposing a joint effort for sustainability, resource management and minimization of the negative impacts that may arise from the events. At Lisbon venues we are committed with our clients and [together](#) we are willing to promote [green and sustainable events!](#)

LISBON VENUES



LISBON
CONGRESS
CENTRE

CCL

LISBON
EXHIBITION
AND CONGRESS
CENTRE

FIL

**LISBON
VENUES**

SUSTAINABILITY



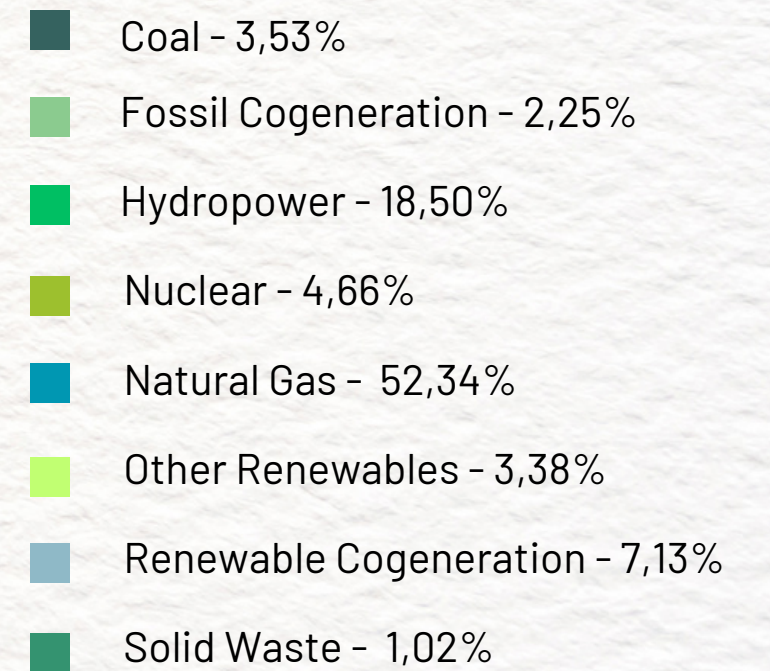
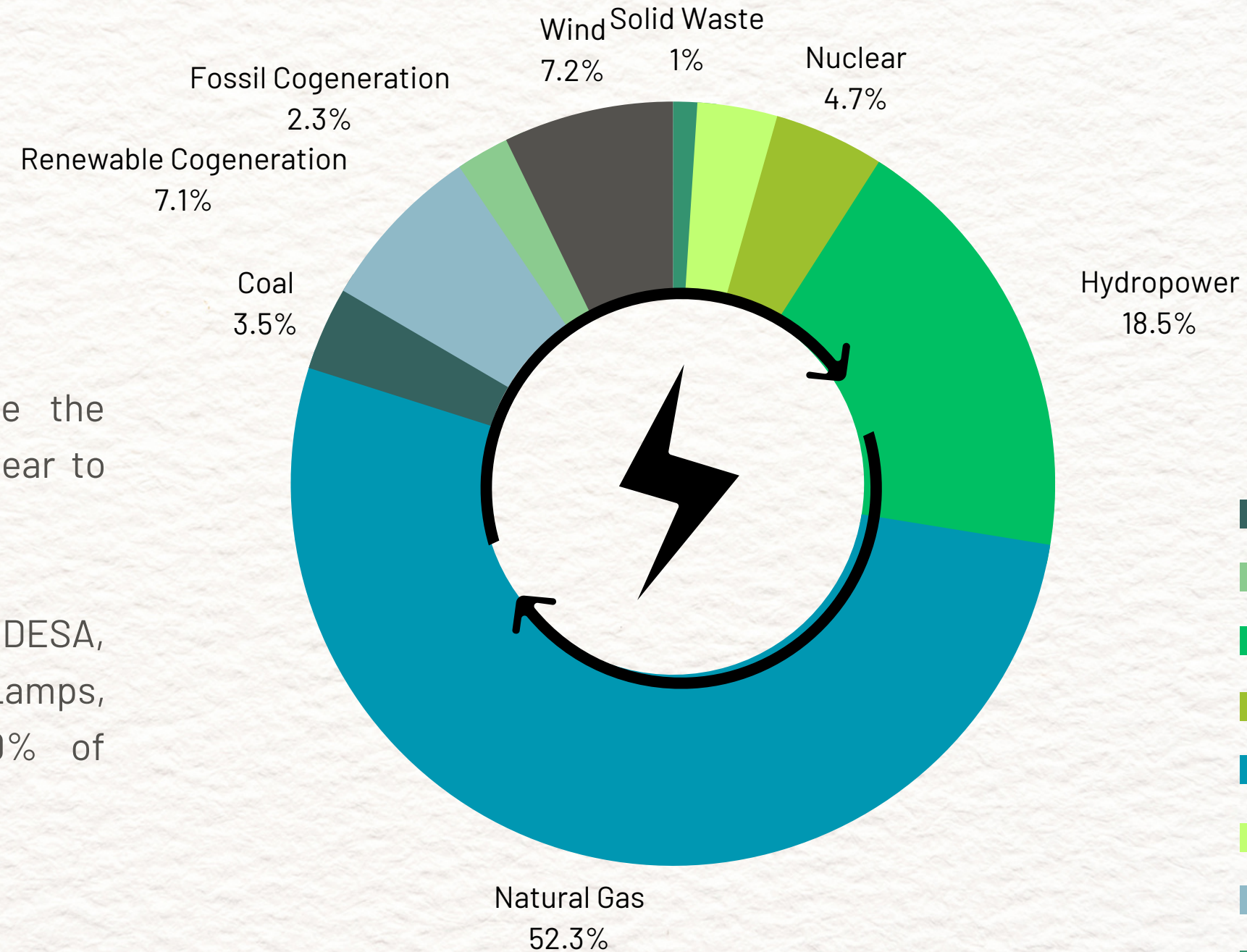
GREEN SOLUTIONS

FOR YOUR EVENT

Both CCL and FIL are trying to reduce the quantities of non-renewable energy from year to year.

According to the latest data available by ENDESA, from 2022, and with the installation of LED Lamps, it managed to reach approximately 30% of renewable energy.

Energy Levels

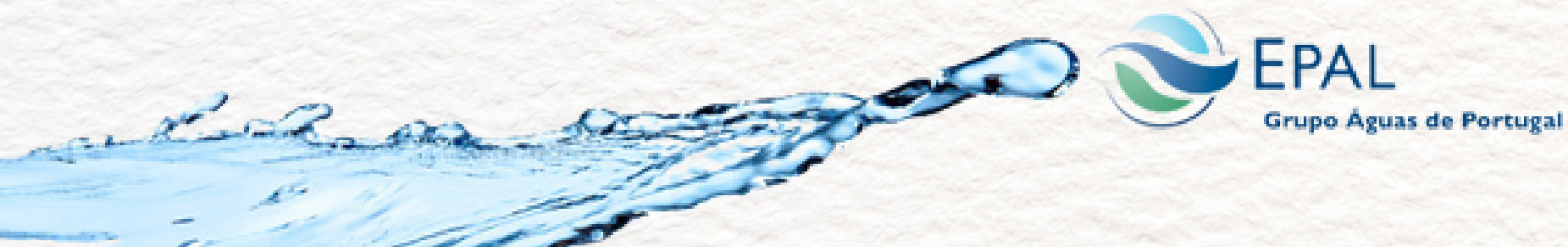


GREEN SOLUTIONS FOR YOUR EVENT

Water Usage

Both Venues took part in EPAL's campaign to raise awareness of tap water sustainability, which invited public and private entities to accept the challenge of exclusively consuming water from the public water supply network in their premises, by providing EPAL water jugs for their common areas (Meeting Rooms, Coffee Break Areas and Canteens).

It has been a common practice ever since and we even provide the equipment to have tap water at your chosen facilities!



GREEN SOLUTIONS

FOR YOUR EVENT



Public Transport

Our venues are located in two privilege areas in the city of Lisbon, offering a vast variety of public transport. We actively promote the usage of train, metro and bus among organizers and participants and also promote walking distance hotels for international visitors.

Due to its close location to main city attractions, such as Belém heritage neighbourhood only 15 min from CCL, the venues surroundings have also been prepared to use more eco-friendly individual transports, such as rented bikes and scooters.



GREEN SOLUTIONS

FOR YOUR EVENT



Waste Avoiding

When purchasing products and materials, we choose those who have less packaging and less aggression for the environment.

All waste products are conveyed to a sorting unit, which is responsible for selection, recovery and recycling, providing the best technical environmental solution. Both venues have waste skips that are used for waste transport to sanitary structures for treatment and recycling.

We reuse materials whenever is possible, and also recycled materials and products for graphic production, signage, decoration and promotional gifts.

Regarding partners and external services, we choose to work directly with local suppliers and agencies, in order to incentive the local community and economy, contributing also for the decreasing of transports and energy impacts.



GREEN SOLUTIONS FOR YOUR EVENT



Waste Management



The waste management services are performed by subcontract, with a specialized company, THE TRIU, SA. They make part of SUMA GROUP of MOTA-ENGIL and started its activities in 1991. The company sort and recover waste by the Center for Integrated Waste Recovery (CIVRE), and they also create a US delegation in the north of Portugal.

THE TRIU, SA ensures the optimization and rationalization of Industrial waste management operations, as well as the guarantee of support professional technical superior in environmental management. As an active agent in preserving the environment, the company assures its customers compliance with legal environmental obligations, services with quality parameters, environment and safety, optimizing and rationalizing the costs associated with waste management. They apply the best pollution prevention practices, identifying and minimizing the environmental impacts associated with their activities.

In addition, the organization is concerned with the satisfaction of its customers, that's why they adequate conditions of safety, hygiene and health at work and respect the environment.



GREEN SOLUTIONS FOR YOUR EVENT

TRIU Services



Daily Services:

- Global Waste Management - Operation waste disposal logistics, Temporary storage of waste & Receiving sorting, recovery and treatment of waste of the Exhibitions Areas;
- Management of specific waste streams in partnerships with their management companies, like with our carpet supplier;
- Clean Up and Aspirations at Technical Industries;
- Achieve in actions and sensibilizations;
- Conducting environmental advice.



THE TRIU, SA take care of the WASTE MANAGEMENT SERVICE DEVILEVRY of LISBON VENUES, including packaging, removal, transport and treatment in recipient or licensed final destination. Taking responsibility for preparation, planning and cordination of all work of service delivery and ensuring that its legal framework, in accordance with the best practices in environmental matters.

Our Venues contain an Mixture of urban waste, a paper and cardboard or a plastic packaging. And glass, metals, plastics and wood containers. The collection service run from Monday to Friday, and could performed in exceptional situations, during the weekends.

THE TRIU, SA shall, in accordance with the legislation in force, filling the respective WASTE MONITORING GUIDE (E-GAR), to monitor the wast from its deposition site to the final destination appropriate. The GAR duly completed, stamped and signed by the respective Producer, Carrier and Recipient.

GREEN SOLUTIONS

FOR YOUR EVENT



In the course of its approach to sustainable development, Fundação AIP Group constantly seeks to improve its processes, creating solutions to limit the environmental impact of the events organized and their premises and also outside.

More and more, we need to think about the environmental impact that events generate and, together with our customers, we try to identify the best solutions and plan events to cause the least possible impact.

An event can bring together tens, hundreds or even thousands of people! Sustainability indicates that a balance is needed that seeks to satisfy the customer's needs while reducing the environmental impact, so we seek to develop some solutions, using more sustainable materials, especially in terms of booth construction, which are more ecological and reusable. The pallet stand system used contains as much recyclable material or plant origin as possible in its composition and is produced locally.



GREEN SOLUTIONS

FOR YOUR EVENT

Sustainability is a priority.

We always search for solutions causing a smaller environment footprint, such as re-usable and eco-designed components.



PARTNERS

PULLING IN THE SAME DIRECTION

We offer a one-stop shop solution, with all of the services and amenities that our clients need for their event with the support of our partner companies. When it comes to hosting **UNIQUE EVENTS**, our clients can rely on the full support of our exclusive partners, which includes catering, AV's, IT and stand assembly experts.



Having the right partners, aiming for the same goal is certainly an investment in the future!

PARTNERS

PULLING IN THE SAME DIRECTION

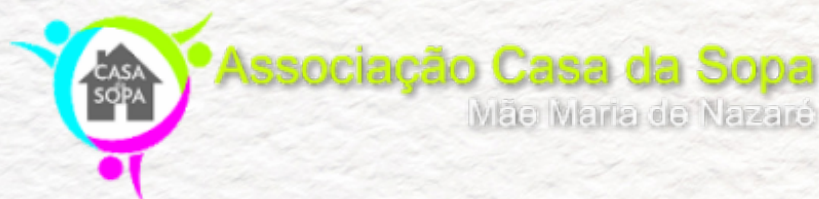


SILVA CARVALHO
CATERING

Catering Partner

"One of the sustainability vectors defined as a priority by the Ibersol Group, in terms of performance, is the environmental dimension. One cannot separate the concept of social responsibility from the concept of sustainable development, which is why the reduction of the environmental impact of the activity of the group is a constant concern. (...) In this sense, we invest daily in reducing the environmental impact that its activities produce."

"(...) the idea of Social Responsibility for Ibersol Group is naturally the offering of meals and the donation of food. As such, in 2016, almost 12 tons of food products were donated, from food that were not consumed in events helped by Silva Carvalho Catering, and were given to the following entities:



ASSOCIAÇÃO
PROTETORA
DA CRIANÇA



PARTNERS

PULLING IN THE SAME DIRECTION



AV's Partner

"We are concerned with ensuring sustainability, environmental respect and social responsibility.

In terms of sustainability and environmental respect, some concerns such as:

- Acquire low energy consumption equipment;
- Actively separate the waste generated daily;
- Separation, including, of hazardous waste generated in the warehouse, which are removed for treatment in accordance with current legislation;
- Use of Plug-in vehicles and Gasoline/Gas fuel mix;
- Use of energy efficiency solutions in the restructuring of the new AVK building, such as:

- 1.Reinforcement of roof insulation, office facades and glazing;
- 2.Installation of ventilation and air conditioning systems with devices for energy saving;
- 3.Replacement of all building lighting by LEDs."



**LISBON
VENUES**

**SOCIAL
RESPONSABILITY**



ASSOCIATIONS

PULLING IN THE SAME DIRECTION

One of the purposes of Lisbon Venues is to promote and sponsor actions that aim to develop the activities of portuguese companies, in the associative, technical, economic and commercial domains, pursuing scientific, cultural, social solidarity and environmental defence purposes.

That's why, Lisbon Venues will provide to ASSOCIAÇÃO SALVADOR:

- the identification of clients interested in providing direct support to association members of the QUALITY OF LIFE GRANT PROJECT;
- the identification of companies interested in creating employment opportunities for association members;
- carrying out awareness-raising activities during the conferences and events with testimonials and explaining the importance of social inclusion;
- the creation of employment implementation measures, such as training actions;
- and, the promotion of an inclusive work environment in companies.



ASSOCIAÇÃO

salvador

ASSOCIATIONS

PULLING IN THE SAME DIRECTION



Associação Salvador is a nonprofit organization founded in 2003, which mission is to integrate and improve the life quality of people with physical disabilities, boosting their talents and creating equal opportunities in society.



3.426 PEOPLE WITH PHYSICAL DISABILITIES SUPPORTED OVER 18 YEARS



10 PROJECTS



3.115 PEOPLE WITH PHYSICAL DISABILITIES REGULARLY ACCOMPANIED



444 LIVES CHANGED THROUGH THE QUALITY OF LIFE GRANT PROJECT



122 REGULAR PARTICIPANTS IN ADAPTED SPORTS



77 PEOPLE WITH PHYSICAL DISABILITIES EMPLOYED IN LISBON AND PORTO



www.associacaosalvador.com



joao@associacaosalvador.com

ASSOCIATIONS

QUALITY OF LIFE GRANT PROJECT



ASSOCIAÇÃO
salvador

TESTIMONIALS



"No matter how many obstacles and barriers that arise, which are immense, we must always fight for our dreams!"

Sandra Manuel

" In February 2014, I was the victim of a crime of domestic violence, in which I was thrown from a 2nd floor window, at a height of 8 meters. I had to put aside some dreams. I cannot pursue them. The biggest one was my job, I was passionate about it. I was a member of a fire department working as an ambulance crew member. (...) I applied for Associação Salvador support and it helped me installing a lift platform in the building where I live. "



"There are certainly many things to discover that a person can do with a chair, that it would be imaginable!"

Daniel Tristão

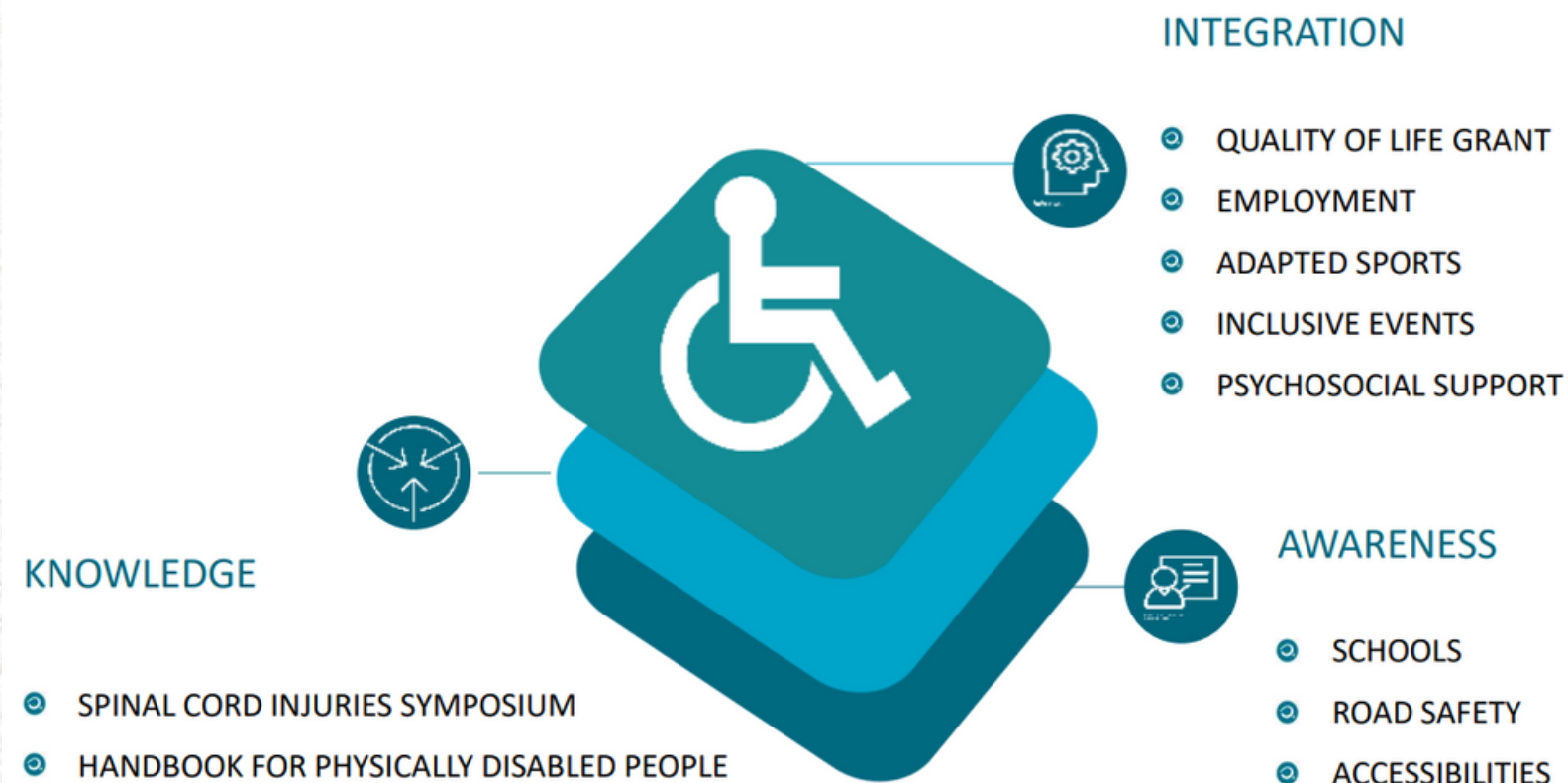
" It was 5 years ago, on New Year's Eve in Andorra. There was a landslide and I had an accident, becoming paraplegic. I kept doing everything the same, but seated, on wheels. I kept dreaming about being a pilot. I got to know the work of Associação Salvador through a training course given by this association at Centro de Reabilitação do Sul in São Brás de Alportel. That's what made me believe in taking on a project in aviation. I took the air route planner course. "

ASSOCIATIONS

PULLING IN THE SAME DIRECTION



INTERVENTION AREAS



Associação Salvador biggest project calls QUALITY OF LIFE GRANT PROJECT, and intends to making a difference for a large number of people with disabilities and proven lack of financial resources. Helping them to have life projects, goals and ambitions that they want to achieve, allowing them to have quality and dignity.

In 2022 Association's received more than 130 applications and supported 35 people:

- Work and improvements at home - 17
- Adapted sports equipment - 16
- Training and Employment - 10

QUALITY OF LIFE GRANT PROJECT

16 ^º EDIÇÕES
478 TOTAL CHANGED LIVES
35 CHANGED LIVES IN 2022
+ 1.600 000,00 € DELIVERY IN SUPPORTS SINCE 1 ^º EDITION
CATEGORIES: <ul style="list-style-type: none">• WORKS AT HOME• TRAINING AND EMPLOYMENT• ADAPTED SPORTS



ASSOCIATIONS

PULLING IN THE SAME DIRECTION

Lisbon Venues also supports the users of the Psychiatry Day Hospital, of the LISBOA OCIDENTAL HOSPITAL CENTRE providing a workplace experience.

This association aims to provide users, a gradual process of reintegration with the professional world, during 6 months, with monitoring and controlling by the hospital structure and, a final evaluation made by CCL - Lisbon Congress Centre.

It is basically an internship experience, on a voluntary and partial basis, with the following objectives:

- acquisition of practical knowledge as a complement to HD treatment;
- Integration of rules and teamwork, of responsibility towards the commitment assumed and of autonomous behaviours, with a view to a better and healthier social integration;
- participation in the various tasks performed by the responsible tutor of the institution;
- elaboration of a brief evaluation about the experience.



CENTRO HOSPITALAR DE
LISBOA OCIDENTAL, E.P.E.

ASSOCIATIONS

PULLING IN THE SAME DIRECTION

Lisbon Venues, within the scope of social responsibility, supports various entities by providing free space so that they can carry out their fundraising events. These entities operate in several areas, from health, support to children and young people, social solidarity and humanitarian purposes.

Diplomatic Bazaar

The International Bazaar of the Diplomatic Corps is a solidarity event promoted by the Association of the Families of Portuguese Diplomats.

The purpose of the DIPLOMATIC CORPUS BAZAR ASSOCIATION,

is to raise funds for the pursuit of charity, assistance, beneficence, social solidarity and humanitarian purposes.



Bazar Diplomático

Causa

ASSOCIATIONS

PULLING IN THE SAME DIRECTION

RASTRILHO

New Future Solidarity Market ASSOCIAÇÃO NOVO FUTURO aims to create and manage small family homes for children and young people deprived of a normal family environment.

Intervention with children and young people is aimed at a gradual acquisition of emotional, social and autonomy skills in order to enable them to exercise positive citizenship.

BLOOD DONATION


The purpose of the group of blood donor at Parque das Nações is to develop all social and humanitarian solidarity within the field of benevolent blood donation.


FIL - Lisbon Exhibition & Convention Centre in the scope of social responsibility joins their mission by providing free space and promoting their activities.




LISBON VENUES CCL FIL

UNIQUE PLACE. UNIQUE EVENTS.
UNFORGETTABLE EXPERIENCES

 lisboacc@ccl.fil.pt

 (+351) 218 921 400

 <https://www.linkedin.com/company/lisbonvenues>

 @lisbonvenues

 www.lisbonvenues.pt

